

## Downlights



This product must be installed in accordance with applicable national and local electrical and construction codes by a person familiar with the construction and operation of the product and the hazards involved.

Failure to comply with the following installation instructions may result in death or serious injury.

### ⚠ WARNING

Do not exceed product specified luminaire voltage (230V-240V or 120-277V 50/60Hz) according to product marking. Any other source will void warranty.

### ⚠ WARNING

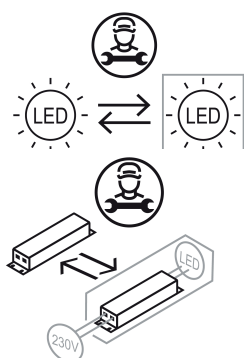
Products are rated for an ambient of 25°C.

### ⚠ WARNING

Do not install if luminaire, parts or connectors are damaged.

### ⚠ WARNING

This Luminaire is not suitable for fire-rated installations.



### CAUTION

Product must be installed with provided power supplies and housings only. Use of other manufacturers' components will void warranty.

### CAUTION

Do not install upside down or horizontally.

### ⚠ WARNING

The light source contained in this luminaire shall only be replaced by the manufacturer or their service agent or a similar qualified person

### ⚠ WARNING



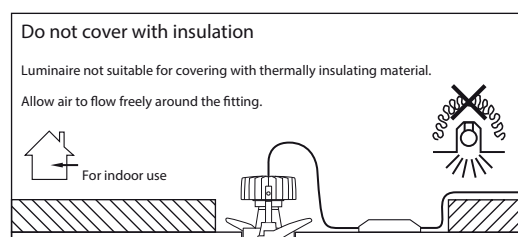
Always wear clean latex or cotton gloves when handling the reflector and mounting mechanism. Marks left on the reflector will reduce light output and cause damage not covered by the manufacturer's warranty.

### CAUTION

Interior use only. IF IP rated options are selected then the product must only be installed in the applicable zone according to national regulations. Any damaged or cracked protective shield must be replaced to ensure IP rating is maintained.

### CAUTION

Unauthorized field repairs or modifications will void warranty. Tampering with power supply, factory wiring or hardware will void warranty.



## Wiring

### ⚠ WARNING

If the driver is disconnected from the LED module, please ensure that the driver has not been powered for at least 1 minute before reconnecting the LED module. The LED module and driver can be seriously damaged and the warranty invalidated.

### ⚠ WARNING

Disconnect power before installing or servicing to avoid electrical shock.

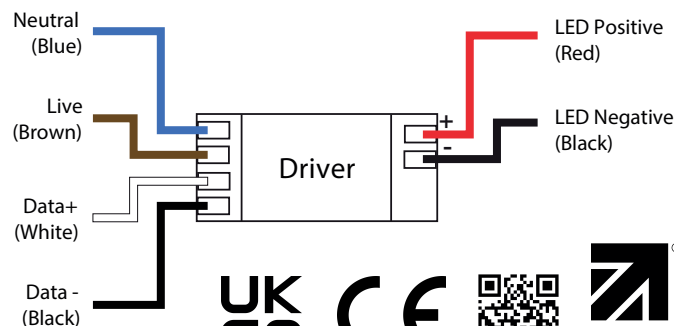
### ⚠ WARNING

Do not expose wiring to edge of sheet metal or sharp objects.

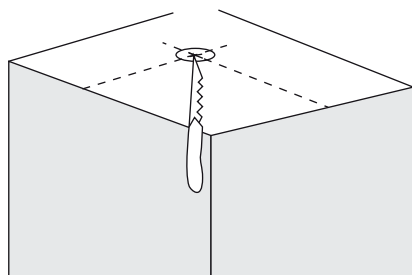
### ⚠ WARNING

Ensure the wiring maintains the correct polarity at all times. Incorrect wiring of the LED module will cause serious damage and will invalidate the warranty.

### WIRING DETAIL

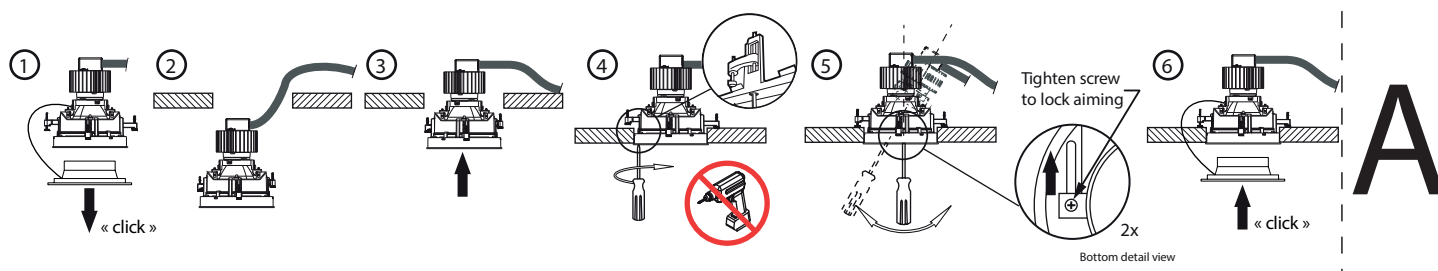


## Installation



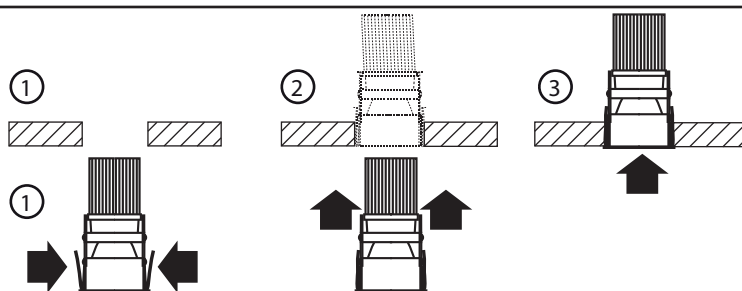
Cut opening in ceiling. See table for cutout dimensions. Cutout must be accurate and clean as oversized or jagged edges will prevent the luminaire from seating properly. A hole saw is recommended for a precise fit.

Lumen Output	Minimum Clearance Above Fixture
05 - 500 lumens	2.5 cm
07 - 700 lumens	2.5 cm
10 - 1000 lumens	2.5 cm
13 - 1300 lumens	2.5 cm
20 - 2000 lumens	2.5 cm
30 - 3000 lumens	2.5 cm
40 - 4000 lumens	5.0 cm
50 - 5000 lumens	5.0 cm

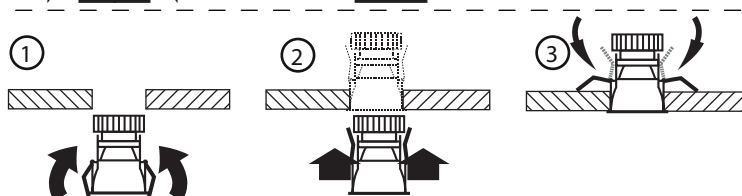


## Downlights

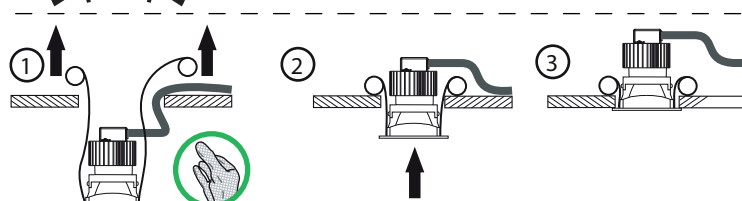
Model	Cutout	Pictogram
M5 - Micro 50	Ø 46 mm	B
W5 - Micro 50 Washer	Ø 46 mm	B
M7 - Micro 70	Ø 60mm	B
M9 - Micro 90	Ø 75mm	C
MA - Micro 90 Washer	Ø 75 mm	C
MX - Micro 120	Ø 122mm	C
MY - Micro 120 Washer	Ø 122mm	C
IM - Imp	Ø 73 mm	D
2M - Imp Square	Ø 73 mm	D
S1 - Imp Soft Round	Ø 73 mm	D
S2 - Imp Soft Round Tilt	Ø 73 mm	D
S3 - Imp Soft Square	71 x 71 mm	D
S4 - Imp Soft Square Tilt	71 x 71 mm	D
IP - Imp Pin Hole	Ø 73 mm	D
2P - Imp Pin Hole Square	Ø 73 mm	D
2Q - Imp Wet	Ø 73 mm	D
3Q - Imp Wet Square	Ø 73 mm	D
IW - Imp Wallwash	Ø 73 mm	D
IX - Imp Wallwash Square	Ø 73 mm	D
W9 - Wet 90	Ø 82 mm	C
B1 - Adjustable 90	Ø 93mm	E
S5 - Soft Round	Ø 92mm	A
S6 - Soft Washer	Ø 92mm	A
TR - Round 90 Trimless	Ø 114mm	H
TS - Square 90 Trimless	113 x 113 mm	H
P1 - Pin Hole	Ø 92 mm	A
P2 - Pin Hole Square	Ø 92 mm	A
MW - Mini Washer	Ø 92 mm	A
M2 - Mini Washer Square	Ø 92 mm	A
UV - The Universal	Ø 95 mm	E
UA - Universal Adjustable	Ø 95 mm	E
UO - Universal Open	Ø 95 mm	E
AQ - Universal Aqua	Ø 95 mm	E
W2 - Area	Ø 122 mm	E
W1 - Washer	Ø 112 mm	E
AM - Axum	Ø 198 mm	I
GC - Cube	132 x 132 mm	F
1T - Trimless Cube	132 x 132 mm	G
GR - Cube Round	Ø 130 mm	F
RT - Trimless Cube Round	Ø 132 mm	G
2C - Cube 2	132 x 235 mm	F
2T - Trimless Cube 2	132 x 235 mm	G
3C - Cube 3	132 x 332 mm	F
3T - Trimless Cube 3	132 x 332 mm	G
4C - Cube 4	235 x 235 mm	F
4T - Trimless Cube 4	235 x 235 mm	G



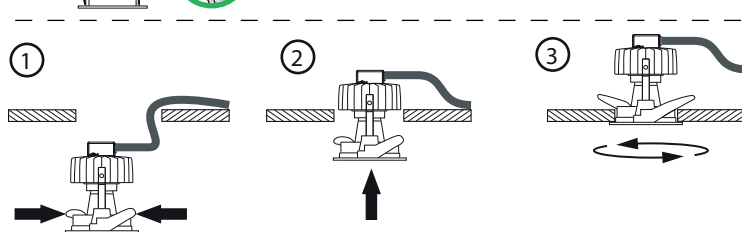
B



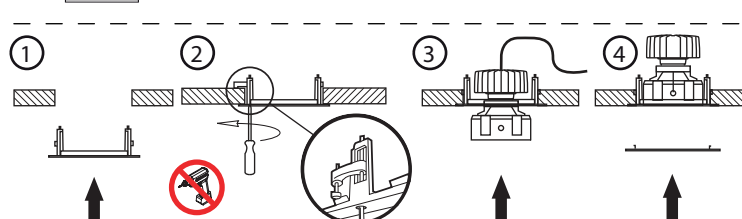
C



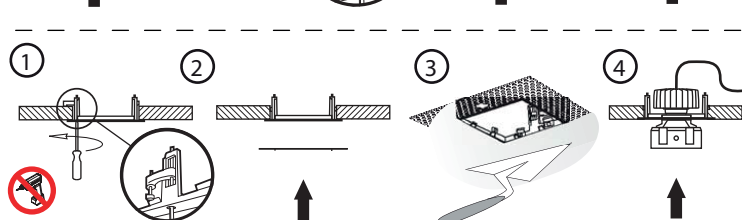
D



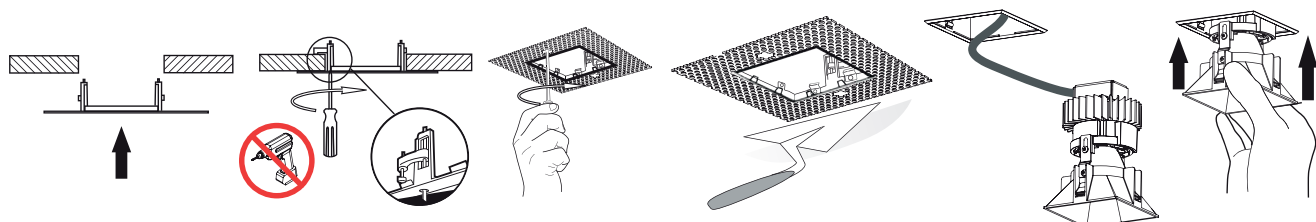
E



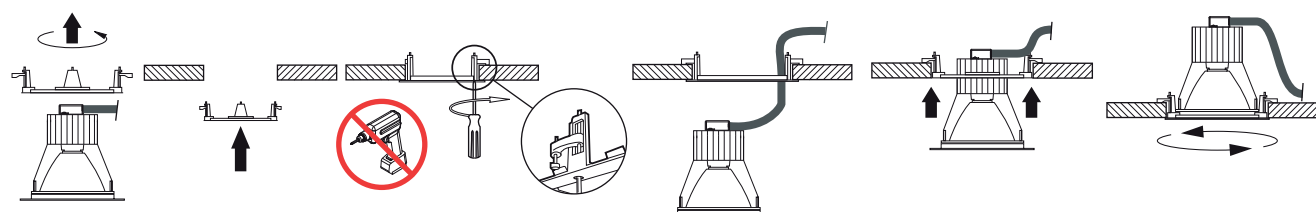
F



G



H



I

This product contains a light source of energy efficiency class A B C D E F G