

INSTALLATION INSTRUCTIONS



This product must be installed in accordance with applicable national and local electrical and construction codes by a person familiar with the construction and operation of the product and the hazards involved. Failure to comply with the following installation instructions may result in death or serious injury.

WARNING
Do not exceed product specified luminaire voltage (230V-240V or 120-277V 50/60Hz) according to product marking. Any other source will void warranty.

WARNING
Do not install if luminaire, parts or connectors are damaged.

WARNING
This luminaire is not suitable for fire-rated installations.

WARNING
The light source contained in this luminaire shall only be replaced by the manufacturer or his service agent or a similar qualified person.

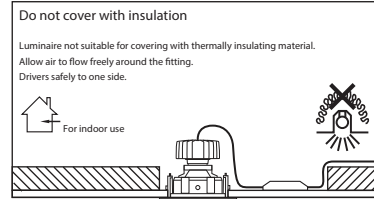
WARNING
Products are rated for an ambient of 25°C.

CAUTION
Unauthorized field repairs or modifications will void warranty. Tampering with power supply, factory wiring or hardware will void warranty.

CAUTION
Product must be installed with provided power supplies and housings only. Use of other manufacturers' components will void warranty.

CAUTION
Do not install upside down or horizontally.

CAUTION
Interior use only. IF IP rated options are selected then the product must only be installed in the applicable zone according to national regulations. Any damaged or cracked protective shield must be replaced to ensure IP rating is maintained.



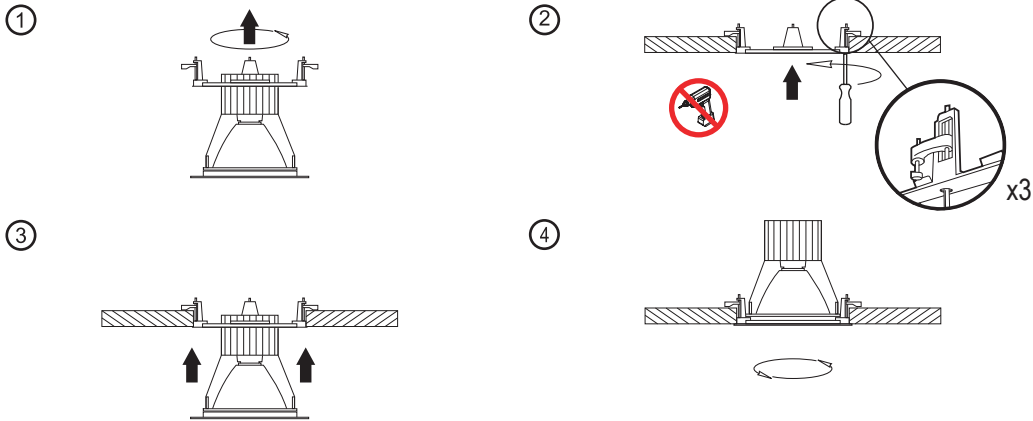
WARNING

Always wear clean latex or cotton gloves when handling the reflector and mounting mechanism. Marks left on the reflector will reduce light output and cause damage not covered by the manufacturer's warranty.

LUMINAIRE INSTALLATION

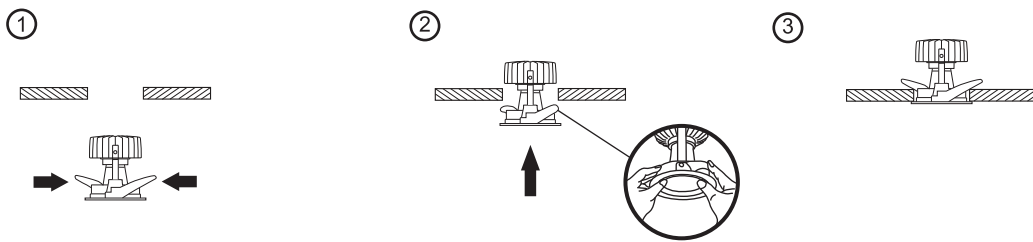
Axum Installation

1. Remove the inner frame by rotating and 'unclipping' from the fitting.
2. Insert inner frame into the ceiling cut out and secure using the AlphaLED fast fix mechanism.
3. Guide the fitting through the inner frame until flush with ceiling.
4. Rotate the front bezel to 'clip' onto inner frame.



Area/Washer Installation

1. Squeeze ceiling support blades inwards and raise the fitting into the ceiling. Release the support blades to secure the fitting.



SPECIFICATION

alphaLED HIGH OUTPUT series - Spacing & Volume table

	Lumen Output (lm)	Height (mm)	Cut Out (mm)	Ceiling Space* (H,D,W)	Volume (CC)
Axum	700	181	Ø198		
	1000	181	Ø198		
	1300	181	Ø198		
	2000	181	Ø198		
	3000	181	Ø198		
Area Washer	400	96	Ø122		
	700	96	Ø122		
	1000	96	Ø122		
	1300	114	Ø122		
	2000	146	Ø122		
	3000	146	Ø122		

*Ceiling space variable, as long as the minimum height/ volume is maintained.