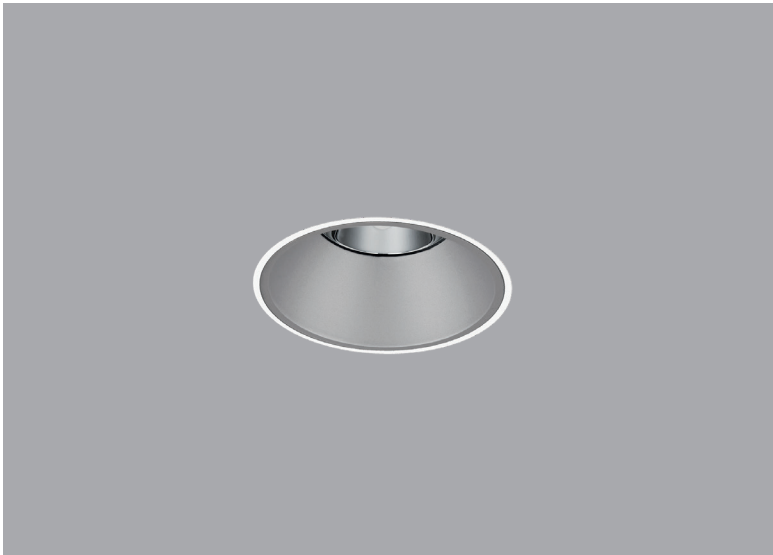
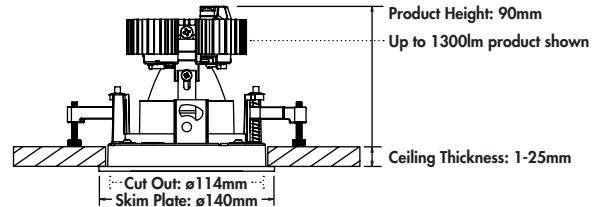


Round 90 Trimless

90 Series



- Precision diecast aluminium construction.
- alphaLED fast fix mechanism.
- For use in ceilings up to up to 25mm deep.
- Soft bezel for enhanced glare control.
- Plaster in frame for seamless look.
- A wide choice of:
 - Lumen Outputs
 - Colour Temperature
 - Beam Angles
 - Colour Fidelity Options
 - Accessories



Product Options

Light Source



XTM

XOB

Output



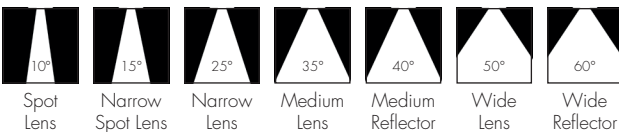
Colour Temperature



Colour Fidelity



Beam Angle



Bezel Colour



Trimless

Inner Bezel Colour



Silver

Custom Colour

Accessories



Honeycomb Louvre

Clear Glass Lens

Softening Glass Lens

Spreader Lens

Product Builder

	Availability	XTM	XOB
Light Source			
(XT)	XTM	○	-
(XO)	XOB	-	○
Lumen Output			
(05)	500lm	○	○
(07)	700lm	○	○
(10)	1000lm	○	○
(13)	1300lm	○	○
(20)	2000lm	○	○
(30)	3000lm	○	○
Colour Temperature			
(22)	2200k	○	-
(27)	2700k	○	○
(30)	3000k	○	○
(35)	3500k	○	-
(40)	4000k	○	○
(56)	5600k	○	-
Colour Fidelity			
(80)	CRI 80+	○	-
(98)	CRI 98	○	-
(V8)	Vibrancy 80	○	-
(V9)	Vibrancy 98	○	-
(90)	Designer Series 90	○	○
(BT)	Beauty Series	○	-
Beam Angle			
(SL)	Spot Lens 10°	-	○
(2L)	Narrow Spot Lens 15°	○	○
(NL)	Narrow Lens 25°	○	○
(ML)	Medium Lens 35°	○	○
(MR)	Medium Reflector 40°	○	○
(WL)	Wide Lens 50°	○	○
(WR)	Wide Reflector 60°	○	○
Colour			
(X)	Trimless	○	○
Inner Bezel Colour			
(SI)	Silver	○	○
(PI)	Custom Colour	○	○
Control			
/DD	DALI		
/DP	DALI Pro		
/DA	1-10v		
/AP	0.1-10v		
/PH	Phase		
/BX	BLE Xicato		
/BC	BLE Casambi		
Accessories			
/HL	Honeycomb Louvre		
/CG	Clear Glass		
/SL	Softening Lens		
/RG	Spread Lens		
/IP	IP54 Bezel		
Emergency			
/M3	3 hour Maintained		
/ST	Self Test		
/DE	DALI Emergency		
Key			
Available		○	
Not Available		-	

Round 90 Trimless - XTM

	Colour Fidelity	CRI80+ / Vibrancy 80 ¹								Designer Series CRI90								CRI98 / Vibrancy 98 ²								Beauty Series										
		500lm	700lm	1000lm	1300lm	2000lm	3000lm	4000lm	5000lm	500lm	700lm	1000lm	1300lm	2000lm	3000lm	4000lm	500lm	700lm	1000lm	1300lm	2000lm	3000lm	4000lm	500lm	700lm	1000lm	1300lm	2000lm								
Lumen Output																																				
Colour Temperature																																				
2200k	(22)	-	-	-	-	-	-	-	-	-	-	-	-	-	-	-	-	-	-	-	-	-	-	●	●	●	○	○	-	-	-	-	-	-	-	-
2700k	(27)	●	●	●	●	○	○	-	-	●	●	●	●	○	-	-	●	●	●	○	○	-	-	●	●	●	○	○	-	-	○	○	○	○	○	○
3000k	(30)	●	●	●	●	○	○	-	-	●	●	●	●	○	-	-	●	●	●	○	○	-	-	●	●	●	○	○	-	-	○	○	○	○	○	○
3500k	(35)	●	●	●	●	○	○	-	-	●	●	●	●	○	-	-	●	●	●	○	○	-	-	●	●	●	○	○	-	-	○	○	○	○	○	○
4000k	(40)	●	●	●	●	○	○	-	-	●	●	●	●	○	-	-	●	●	●	○	○	-	-	●	●	●	○	○	-	-	○	○	○	○	○	○
5600k	(56)	-	-	-	-	-	-	-	-	-	-	-	-	-	-	-	-	-	-	-	-	-	-	-	-	-	-	-	-	-	-	-	-	-	-	-
Beam Angle																																				
Narrow Spot Lens 15°	(2L)	●	●	●	●	-	-	-	-	●	●	●	●	-	-	-	●	●	●	-	-	-	-	●	●	●	-	-	-	-	-	-	-	-	-	-
Narrow Lens 25°	(NL)	●	●	●	●	-	-	-	-	●	●	●	●	-	-	-	●	●	●	-	-	-	-	●	●	●	-	-	-	-	-	-	-	-	-	-
Medium Lens 35°	(ML)	●	●	●	●	○	-	-	-	●	●	●	●	○	-	-	●	●	●	○	○	-	-	●	●	●	○	○	-	-	○	○	○	○	○	○
Medium Reflector 40°	(MR)	●	●	●	●	○	○	-	-	●	●	●	●	○	-	-	●	●	●	○	○	-	-	●	●	●	○	○	-	-	○	○	○	○	○	○
Wide Lens 50°	(WL)	●	●	●	●	○	-	-	-	●	●	●	●	○	-	-	●	●	●	○	○	-	-	●	●	●	○	○	-	-	○	○	○	○	○	○
Wide Reflector 60°	(WR)	●	●	●	●	○	○	-	-	●	●	●	●	○	-	-	●	●	●	○	○	-	-	●	●	●	○	○	-	-	○	○	○	○	○	○
Bezel Colour																																				
Trimless	(X)	●	●	●	●	○	○	-	-	●	●	●	●	○	-	-	●	●	●	○	○	-	-	●	●	●	○	○	-	-	○	○	○	○	○	○
Soft Inner Bezel Colour																																				
Silver	(SI)	●	●	●	●	○	○	-	-	●	●	●	●	○	-	-	●	●	●	○	○	-	-	●	●	●	○	○	-	-	○	○	○	○	○	○
Custom Colour	(PI)	●	●	●	●	○	○	-	-	●	●	●	●	○	-	-	●	●	●	○	○	-	-	●	●	●	○	○	-	-	○	○	○	○	○	○
Control																																				
Standard		●	●	●	●	○	○	-	-	●	●	●	●	○	-	-	●	●	●	○	○	-	-	●	●	●	○	○	-	-	○	○	○	○	○	○
DALI	/DD	●	●	●	●	○	○	-	-	●	●	●	●	○	-	-	●	●	●	○	○	-	-	●	●	●	○	○	-	-	○	○	○	○	○	○
DALI Pro	/DP	●	●	●	●	○	○	-	-	●	●	●	●	○	-	-	●	●	●	○	○	-	-	●	●	●	○	○	-	-	○	○	○	○	○	○
1-10v	/DA	●	●	●	●	○	○	-	-	●	●	●	●	○	-	-	●	●	●	○	○	-	-	●	●	●	○	○	-	-	○	○	○	○	○	○
0.1-10v	/AP	●	●	●	●	○	○	-	-	●	●	●	●	○	-	-	●	●	●	○	○	-	-	●	●	●	○	○	-	-	○	○	○	○	○	○
Phase	/PH	-	●	●	●	○	○	-	-	-	●	●	●	○	-	-	-	●	●	●	○	○	-	-	-	●	●	○	○	-	-	-	○	○	○	○
Bluetooth Casambi	/BC	-	●	●	●	○	○	-	-	-	●	●	●	○	-	-	-	●	●	●	○	○	-	-	-	●	●	○	○	-	-	-	○	○	○	○
Bluetooth Xicato	/BX	-	●	●	●	○	○	-	-	-	●	●	●	○	-	-	-	●	●	●	○	○	-	-	-	●	●	○	○	-	-	-	○	○	○	○
Emergency																																				
3hrs Maintained	/M3	●	●	●	●	○	○	-	-	●	●	●	●	○	-	-	●	●	●	○	○	-	-	●	●	●	○	○	-	-	○	○	○	○	○	○
Self Test	/ST	●	●	●	●	○	○	-	-	●	●	●	●	○	-	-	●	●	●	○	○	-	-	●	●	●	○	○	-	-	○	○	○	○	○	○
DALI Emergency	/DE	●	●	●	●	○	○	-	-	●	●	●	●	○	-	-	●	●	●	○	○	-	-	●	●	●	○	○	-	-	○	○	○	○	○	○
Accessories																																				
Honeycomb Louvre	/HL	●	●	●	●	○	○	-	-	●	●	●	●	○	-	-	●	●	●	○	○	-	-	●	●	●	○	○	-	-	○	○	○	○	○	○
Clear Glass Lens	/CG	●	●	●	●	○	○	-	-	●	●	●	●	○	-	-	●	●	●	○	○	-	-	●	●	●	○	○	-	-	○	○	○	○	○	○
Softening Lens	/SL	●	●	●	●	○	○	-	-	●	●	●	●	○	-	-	●	●	●	○	○	-	-	●	●	●	○	○	-	-	○	○	○	○	○	○
Spread Lens	/RS	●	●	●	●	○	○	-	-	●	●	●	●	○	-	-	●	●	●	○	○	-	-	●	●	●	○	○	-	-	○	○	○	○	○	○

Key

- Available with all beam angles.
- Not available with Narrow Spot Lens 15° (2L) / Narrow Lens 25° (NL)
- Not available with Narrow Spot Lens 15° (2L) / Narrow Lens 25° (NL) / Medium Lens 35° (ML) / Wide Lens 50° (WL)
- Not available

Notes:
¹ Vibrancy 80 only available in 3000k.
² Vibrancy 98 only available in 3000k.

Round 90 Trimless - XOB

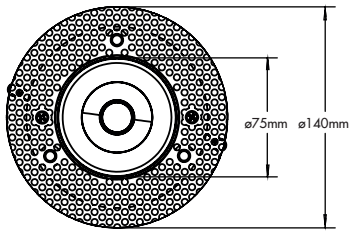
Colour Fidelity		Designer Series CRI90						
		500lm	700lm	1000lm	1300lm	2000lm	3000lm	4000lm
Lumen Output								
Colour Temperature								
2700k	(27)	●	●	○	○	⊙	○	-
3000k	(30)	●	●	○	○	⊙	○	-
4000k	(40)	●	●	○	○	⊙	○	-
Beam Angle								
Spot Lens 10°	(SL)	●	●	-	-	-	-	-
Narrow Spot Lens 15°	(2L)	●	●	○	○	-	-	-
Narrow Lens 25°	(NL)	●	●	○	○	-	-	-
Medium Lens 35°	(ML)	●	●	○	○	⊙	-	-
Medium Reflector 45°	(MR)	●	●	○	○	⊙	○	-
Wide Lens 55°	(WL)	●	●	○	○	⊙	-	-
Wide Reflector 60°	(WR)	●	●	○	○	⊙	○	-
Bezel Colour								
Trimless	(X)	●	●	○	○	⊙	○	-
Soft Inner Bezel Colour								
Silver	(SI)	●	●	○	○	⊙	○	-
Custom Colour	(PI)	●	●	○	○	⊙	○	-
Control								
Standard		●	●	○	○	⊙	○	-
DAII	/DD	●	●	○	○	⊙	○	-
DAII Pro	/DP	●	●	○	○	⊙	○	-
1-10v	/DA	●	●	○	○	⊙	○	-
0.1-10v	/AP	●	●	○	○	⊙	○	-
Phase	/PH	●	●	○	○	⊙	○	-
Bluetooth Casambi	/BC	●	●	○	○	⊙	○	-
Bluetooth Xicato	/BX	●	●	○	○	⊙	○	-
Emergency								
3hrs Maintained	/M3	●	●	○	○	⊙	○	-
Self Test	/ST	●	●	○	○	⊙	○	-
DAII Emergency	/DE	●	●	○	○	⊙	○	-
Accessories								
Honeycomb Louvre	/HL	●	●	○	○	⊙	○	-
Clear Glass Lens	/CG	●	●	○	○	⊙	○	-
Softening Lens	/SL	●	●	○	○	⊙	○	-
Spread Lens	/RS	●	●	○	○	⊙	○	-

Key

- Available with all beam angles.
- Not available with Spot Lens 10° (SL)
- ⊙ Not available with Spot Lens 10° (SL) / Narrow Spot Lens 15° (2L) / Narrow Lens 25° (NL)
- Not available with Spot Lens 10° (SL) / Narrow Spot Lens 15° (2L) / Narrow Lens 25° (NL) / Medium Lens 35° (ML) / Wide Lens 55° (WL)
- Not available

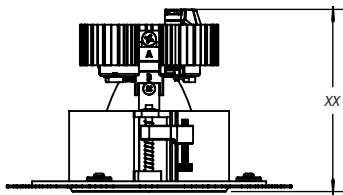
Round 90 Trimless

Dimensions



Ceiling cutout: $\varnothing 114\text{mm}$
 Max ceiling thickness: 1 - 25mm

XTM - Product Height



Medium Lens 35° / Wide Lens 50°

	CRI80+ / Vibrancy 80	Designer Series CRI90	CRI98 / Vibrancy 98 / Beauty Series
500lm	90mm	90mm	90mm
700lm	90mm	90mm	90mm
1000lm	90mm	90mm	90mm
1300lm	90mm	90mm	90mm
2000lm	120mm	120mm	120mm

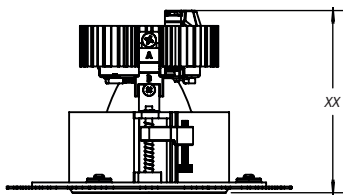
Narrow Spot Lens 15° / Narrow Lens 25°

	CRI80+ / Vibrancy 80	Designer Series CRI90	CRI98 / Vibrancy 98 / Beauty Series
500lm	90mm	90mm	90mm
700lm	90mm	90mm	90mm
1000lm	90mm	140mm	140mm
1300lm	140mm	-	-

Medium Reflector 40° / Wide Reflector 60°

	CRI80+ / Vibrancy 80	Designer Series CRI90	CRI98 / Vibrancy 98 / Beauty Series
500lm	90mm	90mm	90mm
700lm	90mm	90mm	90mm
1000lm	90mm	90mm	90mm
1300lm	90mm	90mm	90mm
2000lm	120mm	120mm	120mm
3000lm	140mm	-	-

XOB - Product Height



Medium Lens 40° / Wide Lens 55°

	Designer Series CRI90
500lm	88mm
700lm	88mm
1000lm	88mm
1300lm	88mm
2000lm	118mm

Spot Lens 10° / Narrow Spot Lens 15° / Narrow Lens 25°

	Designer Series CRI90
500lm	88mm
700lm	88mm
1000lm	88mm
1300lm	88mm

Medium Reflector 45° / Wide Reflector 60°

	Designer Series CRI90
500lm	88mm
700lm	88mm
1000lm	88mm
1300lm	88mm
2000lm	118mm
3000lm	118mm

Round 90 Trimless

Circuit Wattage

XTM - Total Circuit Wattage

Narrow Spot Lens 15° / Narrow Lens 25°

	CRI80+ / Vibrancy 80	Designer Series CRI90	CRI98 / Vibrancy 98 / Beauty Series
500lm	6.7W	6.7W	9.0W
700lm	9.0W	9.0W	12.9W
1000lm	12.9W	12.9W	18.4W
1300lm	18.4W	18.4W	-

Medium Lens 35° / Wide Lens 50°

	CRI80+ / Vibrancy 80	Designer Series CRI90	CRI98 / Vibrancy 98 / Beauty Series
500lm	4.4W	5.2W	5.6W
700lm	6.0W	6.8W	7.9W
1000lm	8.3W	9.6W	11.2W
1300lm	11.9W	13.6W	16.0W
2000lm	18.0W	20.1W	23.7W

Medium Reflector 40° / Wide Reflector 60°

	CRI80+ / Vibrancy 80	Designer Series CRI90	CRI98 / Vibrancy 98 / Beauty Series
500lm	4.4W	5.2W	5.6W
700lm	6.0W	6.8W	7.9W
1000lm	8.3W	9.6W	11.2W
1300lm	11.9W	13.6W	16.0W
2000lm	18.0W	20.1W	23.7W
3000lm	29.7W	-	-

XOB - Total Circuit Wattage

Spot Lens 10°

	Designer Series CRI90
500lm	5.9W
700lm	7.6W

Narrow Spot Lens 15° / Narrow Lens 25°

	Designer Series CRI90
500lm	5.3W
700lm	7.1W
1000lm	9.8W
1300lm	11.8W

Medium Lens 40° / Wide Lens 55°

	Designer Series CRI90
500lm	5.3W
700lm	7.1W
1000lm	9.8W
1300lm	11.8W
2000lm	17.5W

Medium Reflector 45° / Wide Reflector 60°

	Designer Series CRI90
500lm	5.3W
700lm	7.1W
1000lm	9.8W
1300lm	11.8W
2000lm	17.5W
3000lm	25.9W

Round 90 Trimless

Paint Finish

Inner Soft Bezel



Silver
RAL 9006



Custom Colour